

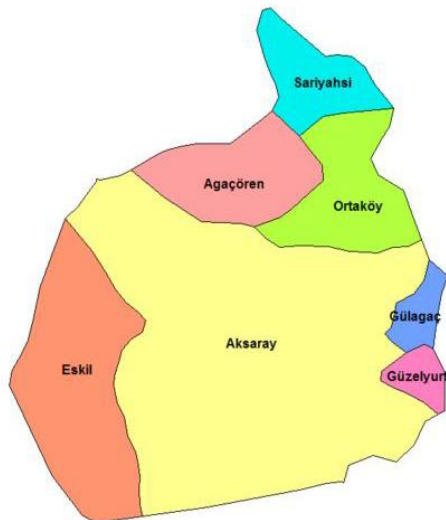
**Traditional Karamanlides Houses
Of
Gelveri / Turkey
At The Impact Of Cultural
Exchange**

**Aksaray University
Architecture and Dizayn Faculty
Architecture Department
Assist. Prof. Ebru Şahin Mercimek**

1. General settlement properties and sociocultural structure of Güzelyurt (Gelveri)

1.1. Settlement properties of Güzelyurt (Gelveri), the study site

Guzelyurt (Gelveri) is a town of the province of Aksaray, situated in the Central Anatolia Region. Guzelyurt, located at the southern entrance of Cappadocia, on the slopes of the volcanic Mount Hasan.



1. General settlement properties and sociocultural structure of Güzelyurt (Gelveri)

1.2. Historical significance of Güzelyurt and historical processes affecting its social structure

Guzelyurt was referred to as “Kerbele” ,“Karbala” , “Karvala”, “Gelveri” in its historical process. It finally took the name of Guzelyurt in 1965 and became a town Aksaray became a province in 1989.

Güzelyurt ‘ s region and its surroundings have been inhabited even in the most ancient times, resulting in cultural and physical values bearing traces of various cultures. Traces of cultural identity of Gelveri, which changed throughout its history, can be seen in its architecture.

Cappadocia was a refuge for Christians fleeing to Anatolia from the persecution of the Roman Empire, which did not yet adopt Christianity.

1. General settlement properties and sociocultural structure of Güzelyurt (Gelveri)

1.2. *Historical significance of Güzelyurt and historical processes affecting its social structure*

After Rome adopted Christianity as the official religion in 312 (three hundred twelve) AD, against change and the spread of Christianity, St. Basileios and St. Gregorius, who were the founders of Orthodox sect, lead to the formation and spread of monastic life in **Gelveri**.

Muslim population in the region began to increase for the first time with Seljuk rule, Muslim population was always a minority until the 1924 population exchange. Because, this region was an important and well established centre of Christian Orthodox sect for more than 1500 (one thousand five hundred) years.

1. General settlement properties and sociocultural structure of Güzelyurt (Gelveri)

1.3. Sociocultural and social structure in Güzelyurt (Gelveri)

The major transformation of social and demographic structure of Güzelyurt (Gelveri), the population of which mostly comprises Muslim Turkish people today, began in the 1923–1924 population exchange between Greece and Turkey.

After the population exchange, no Christian population was left in Gelveri. During the period thereafter, emigrants and local Muslim community lived together.

1. General settlement properties and sociocultural structure of Güzelyurt (Gelveri)

1.3. Sociocultural and social structure in Güzelyurt (Gelveri)

When we investigated the ethnic origin of the Christian population, which were the indigenous people of the Gelveri region since the Seljuk era, there were two concepts: **“Rum”** and **“Karamanlides”**.

The expression “Rum” is known to be used for civilizations influenced by Greek and Hellenic civilizations, the ancestors of whom settled in Anatolia in the past, including Lydians, Phrygians, Romans, Byzantines and mean “Roman” or “Anatolian”, while the identity of the Karamanlides has been the subject of debate.

1. General settlement properties and sociocultural structure of Güzelyurt (Gelveri)

1.3. Sociocultural and social structure in Güzelyurt (Gelveri)

The Karamanlides belonging to the Orthodox faith who lived in and around the Karaman region in Anatolia can be defined as indigenous people who lived in that region since the Anatolian Seljuk era and coexisted with the Muslim Turkish population further during the Ottoman era. The Karamanlides used a language called “**Karamanlıca**”. Karamanlıca, which was spoken by Orthodox Christians of Cappadocia, is a language spoken in Turkish but written using the Greek alphabet.

KARAMAN TÜRKÇESİ ALFABESİ			
Büyük Harfler		Küçük Harfler	
A	A	α	a
ΑΙ	E	αι	e
Β	B	β, π	b
ΤΖ	C, Ç	τζ	c, ç
Δ, Τ	D	τ, ντ, σ	d
E	E	ε, αι	e
Φ	F	φ	f
Γ	G, Ğ	γγ, γ	g, ğ
X	H	χ	h
Η, Ι	I, İ	ι, ει, η̇, οι, υ	i, i
K	K	κ, γ	k
Λ	L	λ	l
M	M	μ	m
N	N,	ν	n
O	O, Ö	ο, ω	o, ö
Π	P	π	p
P	R	ρ	r
C	S, Ş	σ,	s, ş
Σ	S, Ş, Z	ς	s, ş
T	T	τ	t
OY, ΙϚ, υ	U, Ü	ου	u, ü
B	V	β	v
ΠΙ	Y	Ϛ	y
Z	Z	ζ, z	z

1. General settlement properties and sociocultural structure of Güzelyurt (Gelveri)

1.3. Sociocultural and social structure in Güzelyurt (Gelveri)

As a result of the investigations carried out under this study, discussions about the Karamanlides were examined, and origins and culture of the population who had lived in the region from the early Christian era to late Byzantine era were taken into account. Considering that in consecutive historical processes:

The Karamanlides are a group of people from Anatolia who, after the lands, previously inhabited by the Romans and Byzantines, were dominated by the Seljuk dynasty, emerged as a result of coexistence, enriched by mutual social and cultural interactions, of Christians with Rum (Greek and Hellenistic) descent and Muslim Turkish people for more than 800 years until the end of the Ottoman era.

2. Conservation of traditional architectural housing units in Güzelyurt

2.1. Description of traditional housing unit in Güzelyurt

Almost all residents of Güzelyurt (Gelveri), which was under the Seljuk and Ottoman rule were always Christian. These people are Karamanlides, whose ethnic origins are thought to date back Byzantine, and who partially adopted Seljuk and Ottoman cultures. Therefore, it was concluded that specific traditional fabric of Gelveri might have occurred as a synthesis of mixed cultures, which we may call Anatolian Architecture, which date back to the Byzantine era and emerged as a result of its enrichment by local cultures and of partial influence of eastern cultures.

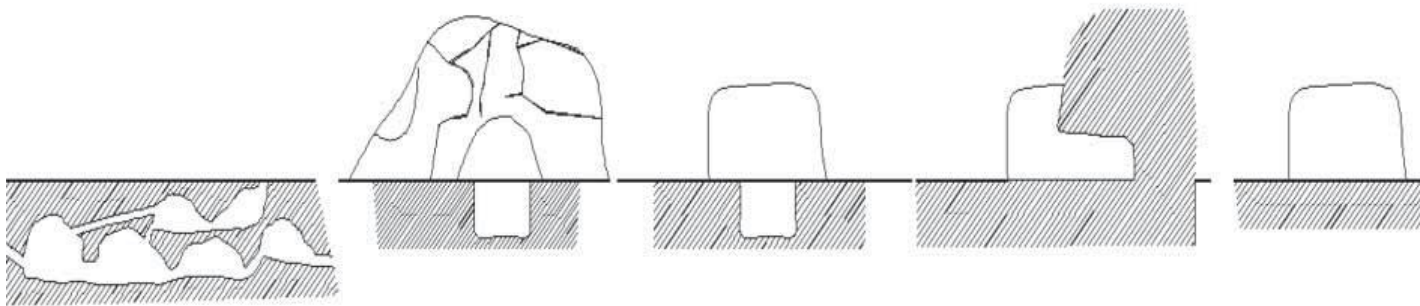


Figure 1. The process involving emergence of housing units on the surface in Güzelyurt (Sahin 2014).

2. Conservation of traditional architectural housing units in Güzelyurt

2.2. Evolution of traditional housing units in Güzelyurt and formation of plan types

We can explain physical phenomenon of urbanization of Güzelyurt by a structural evolution process which stretches from the underground to the surface and develops with different forms and settings on the surface. The first phase of this process involving the concept of housing, which stretches from the underground to the aboveground and continues there, begins with rock-carved (primitive) structure groups

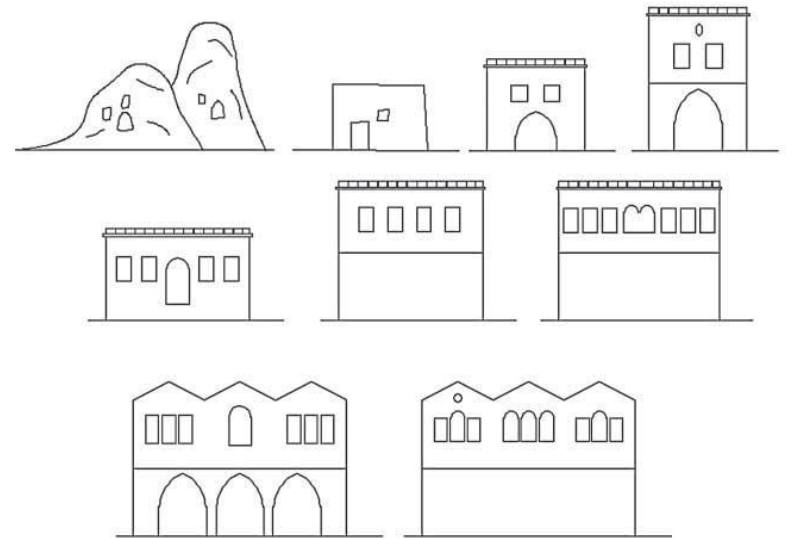


Figure 2. Development of types of facades in traditional Güzelyurt houses (Sahin 2014).

3. Plan types of traditional Guzelyurt (Gelveri) houses

3.1. Housing structures shaped by underground and nature

3.1.1. Rock-carved housing structures (primitive buildings) (the impact of culture covering the period between the Hittites 3000 BC and Monasteries Period AD 397)

3.1.1.1. Underground cities:

Underground cities, which are composed of places of shelter, temples in historical periods dating back to the Hittites, represent the oldest housing structures of Guzelyurt.



3. Plan types of traditional Guzelyurt (Gelveri)houses

3.1. Housing structures shaped by underground and nature

3.1.1. *Rock-carved housing structures (primitive buildings) (the impact of culture covering the period between the Hittites 3000 BC and Monasteries Period AD 397)*

3.1.1.2. *Rock-carved slope structures.*

A great majority of such structures lie in Manastır Vadisi (Monastery Valley) in Guzelyurt. Some of these rock-carved structures comprise churches and monasteries dating back to the early Christian period and some are primitive rock-carved houses (Figure 4).

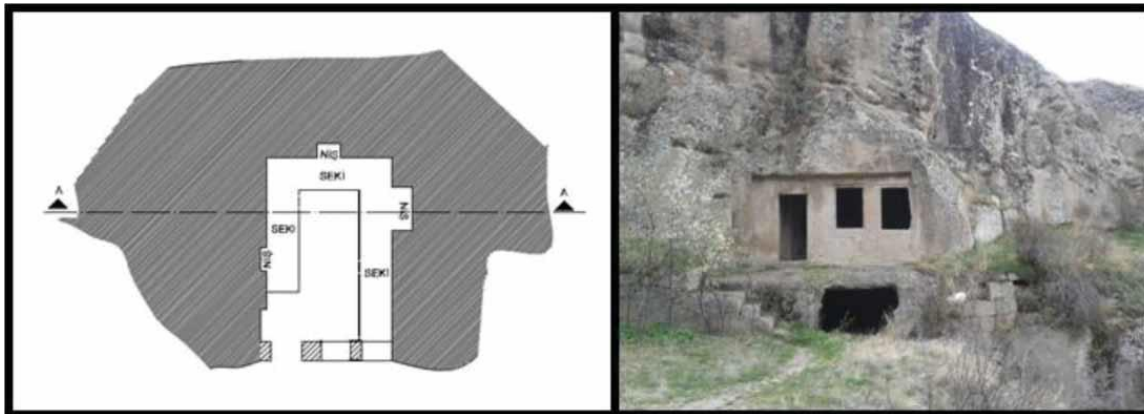


Figure 4. Rock-carved slope structure (Sahin 2014).

3. Plan types of traditional Guzelyurt (Gelveri)houses

3.1. Housing structures shaped by underground and nature

3.1.1. *Rock-carved housing structures (primitive buildings) (the impact of culture covering the period between the Hittites 3000 BC and Monasteries Period AD 397)*

3.1.1.3. *Rock-carved + early masonry slope structures.*

These are either vaulted rock-carved structures built using a masonry technique which includes a semiopen unit defining and protecting the entrance or structures built by closing one of the sides of rock-carved structures with a masonry wall (Figure 5).

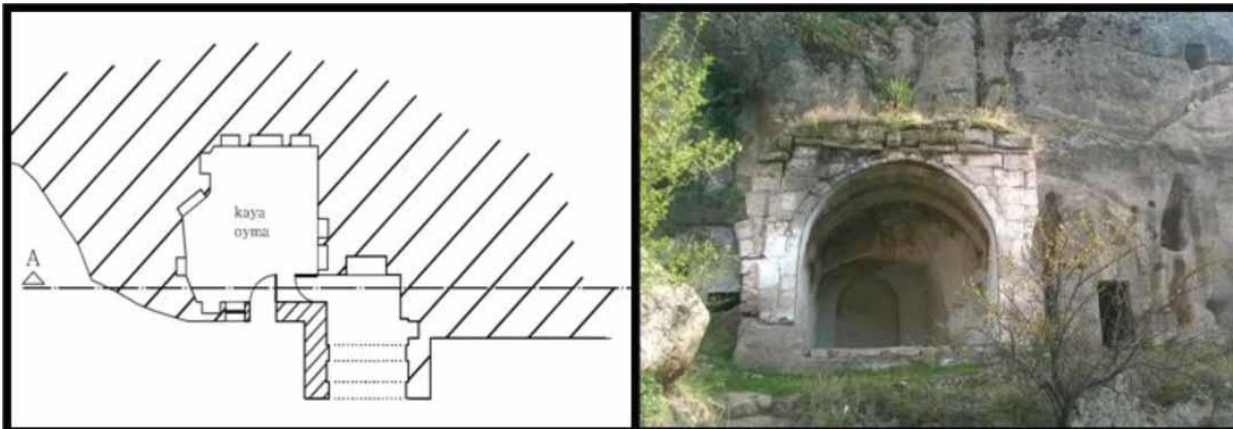


Figure 5. Rock-carved + early masonry slope structure (Sahin 2014).

3. Plan types of traditional Guzelyurt (Gelveri)houses

3.2. Aboveground housing structures

3.2.1. Early period housing structures

3.2.1.1. Rock-carved + early masonry structures.

It is the period when construction techniques gradually began to occur independent of land forms, and human beings interventions in nature began to develop without being limited by forms created by nature. Door and window openings are similar to those of today (Figure 6).

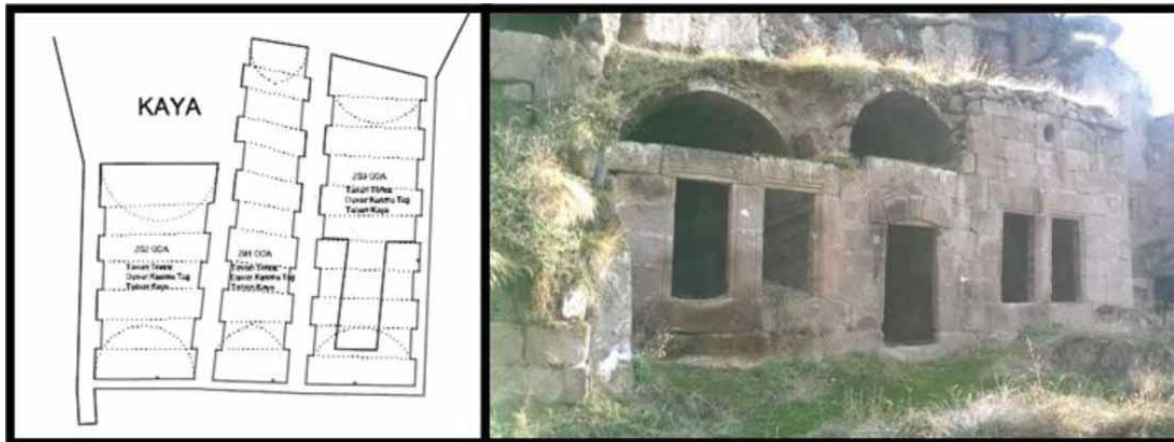


Figure 6. Rock-carved + early masonry housing unit (Sahin 2014).

3. Plan types of traditional Guzelyurt (Gelveri)houses

3.2. *Aboveground housing structures*

3.2.1. *Early period housing structures*

3.2.1.2. *Early masonry structures.*

These are single-storey masonry buildings made of freestone, configuration of which is almost detached from nature and which do not have any rock-carved volumes (Figure 7).

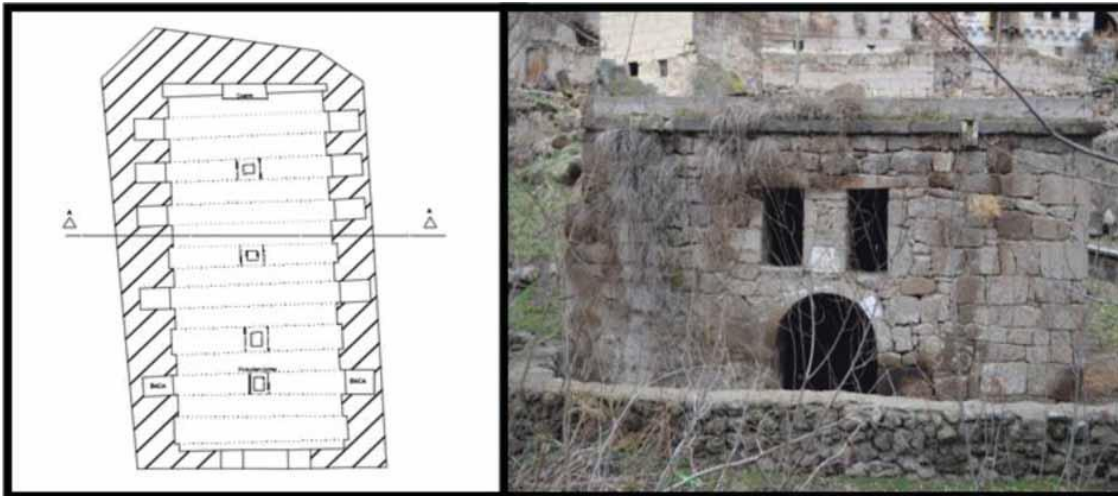


Figure 7. Early masonry building (Sahin 2014).

3. Plan types of traditional Guzelyurt (Gelveri)houses

3.2. Aboveground housing structures

3.2.2. Transition period housing structures

3.2.2.1. The type with an external anteroom with colonnade on ground level.

They are located as single storey on the ground (Figure 8). They have one closed and one semi-open volumes.

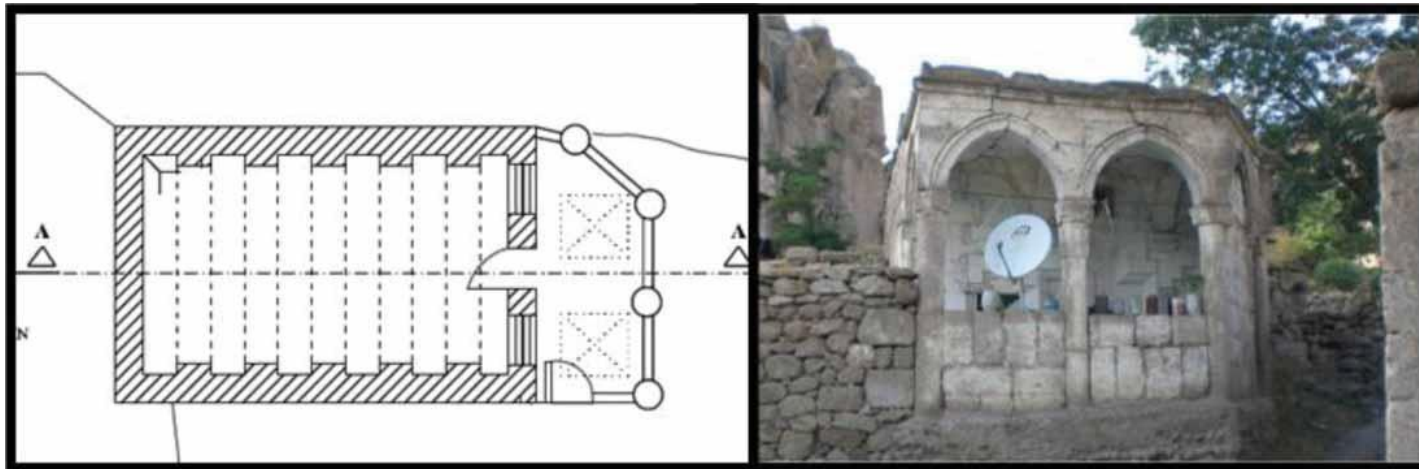


Figure 8. Building with an external anteroom with colonnade on ground level (Sahin 2014).

3. Plan types of traditional Guzelyurt (Gelveri)houses

3.2. Aboveground housing structures

3.2.2. Transition period housing structures

3.2.2.2. The type with an internal anteroom with colonnade on rock-carved section.

It is the type of structure which has an internal anteroom with colonnade built on rock-carved volumes (Figure 9).

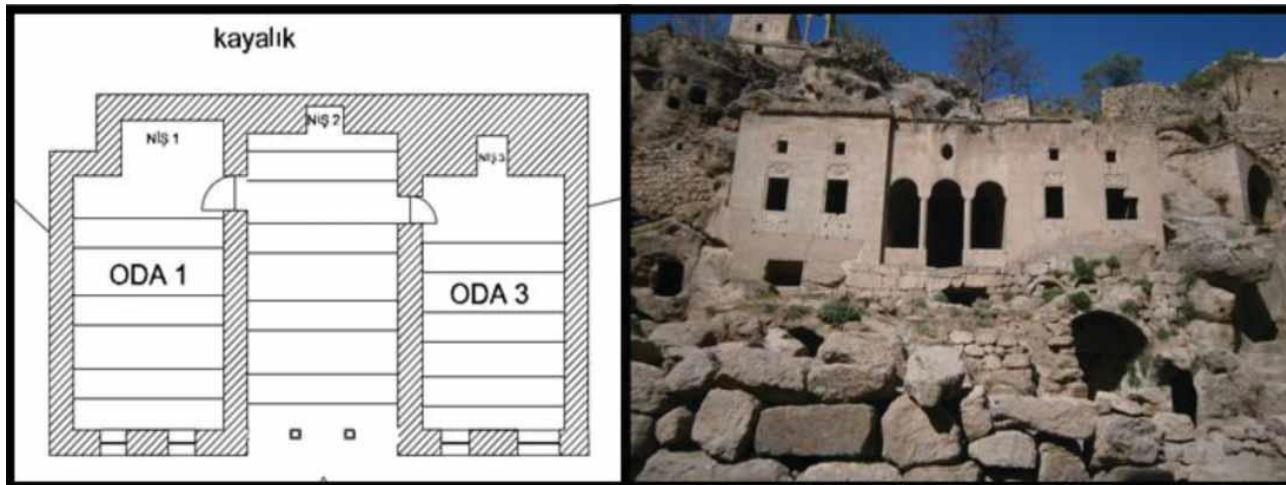


Figure 9. Building with internal anteroom with colonnade on rock-carved section (Sahin 2014).

3. Plan types of traditional Guzelyurt (Gelveri)houses

3.2. Aboveground housing structures

3.2.3. Late period housing structures (structures under the influence of the Ottoman culture and the Baroque period, 1600–1900)

3.2.3.1. The type without an anteroom.

Buildings of this class of structures do not have an anteroom but they have a usage floor comprising one or two rooms on a masonry volume, and a lower floor often used as a storage area, warehouse or barn (Figure 11).

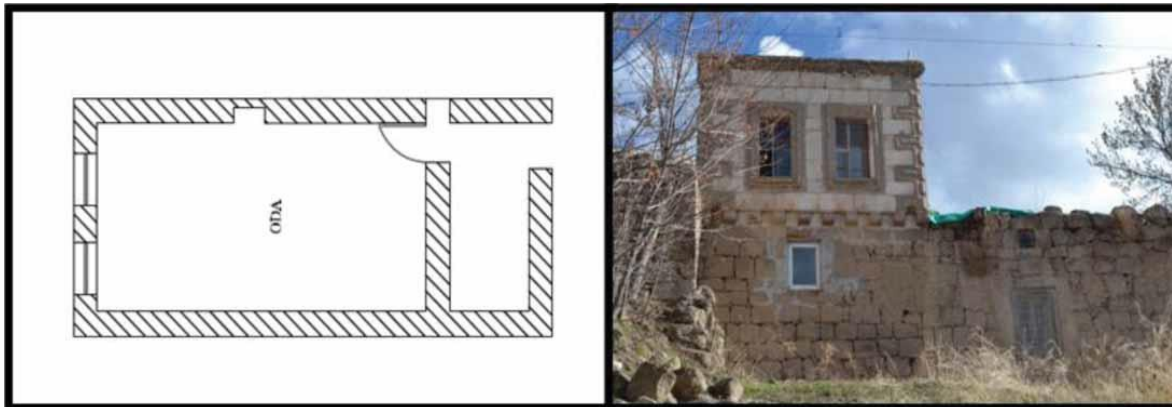


Figure 11. Exemplary plan of late period housing unit without an anteroom (Sahin 2014).

3. Plan types of traditional Guzelyurt (Gelveri)houses

3.2. Aboveground housing structures

3.2.3. Late period housing structures (structures under the influence of the Ottoman culture and the Baroque period, 1600–1900)

3.2.3.2. The type with interspace.

This class of structures is different from the type without an anteroom due to configuration of the usage floor. They usually have a masonry or rock-carved volume belonging to the service area in the lower floor, while there are two rooms and an intermediate space, defined as interspace, connecting these rooms in the upper usage floor (Figure 12).

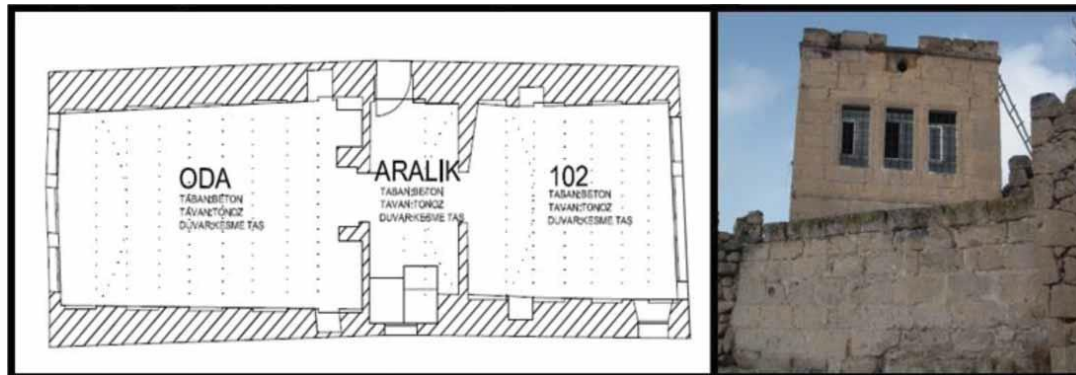


Figure 12. Late period housing with interspace (Sahin 2014).

3. Plan types of traditional Guzelyurt (Gelveri)houses

3.2. Aboveground housing structures

3.2.3. Late period housing structures (structures under the influence of the Ottoman culture and the Baroque period, 1600–1900)

3.2.3.3. The type with an inner anteroom or interspace, showing horizontal development.

In late period type with inner anteroom, showing horizontal development, in which the lower floor usually comprises masonry or rock-carved volumes, the usage floor is composed of rooms situated around an anteroom.

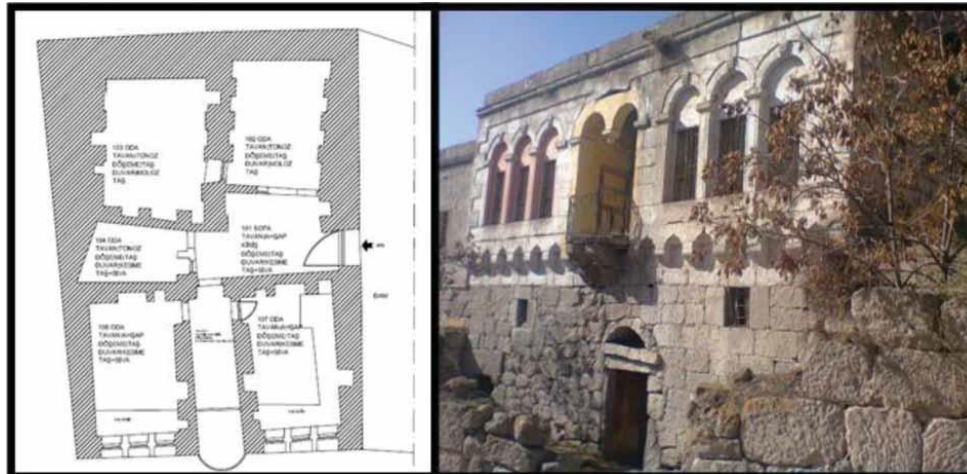


Figure 13. A late period interspaced housing unit plan showing horizontal development (Sahin 2014).

3. Plan types of traditional Guzelyurt (Gelveri)houses

3.2. Aboveground housing structures

3.2.4. *Recent period housing structures (advanced structures from the nineteenth century and structures from the first quarter of the twentieth century)*

3.2.4.1. *The type with a direct passage from rooms but without an anteroom.*

These are housing units with a usage floor, involving a plan type in which the rooms are directly connected to each other without a common area such as an anteroom (Figure 14).

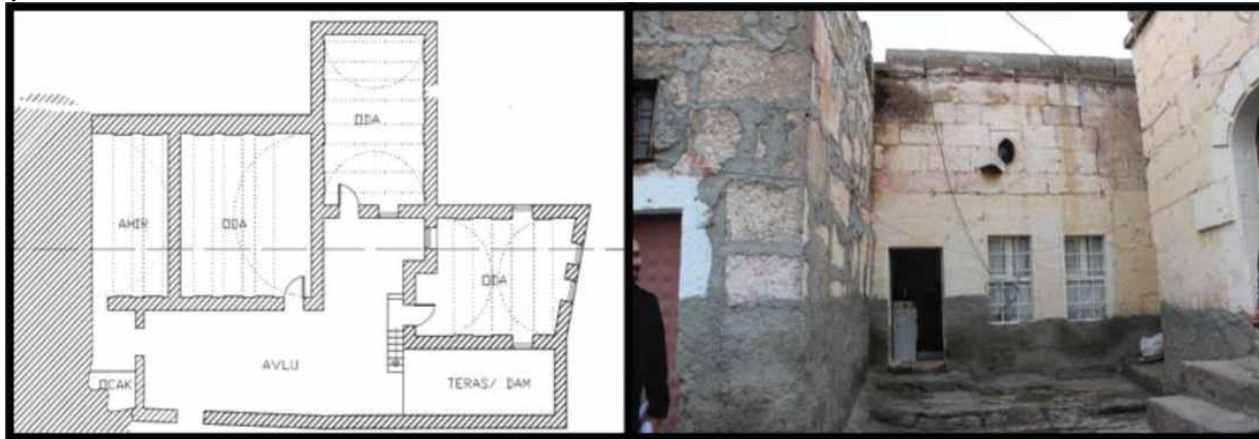


Figure 14. Recent period housing with a direct passage from rooms but without an anteroom (Sahin 2014).

3. Plan types of traditional Guzelyurt (Gelveri)houses

3.2. Aboveground housing structures

3.2.4. *Recent period housing structures (advanced structures from the nineteenth century and structures from the first quarter of the twentieth century)*

3.2.4.2. *The type with an inner anteroom.*

It has a usage floor where the rooms are situated on both sides of the anteroom, leaving it in the middle (Figure 15)

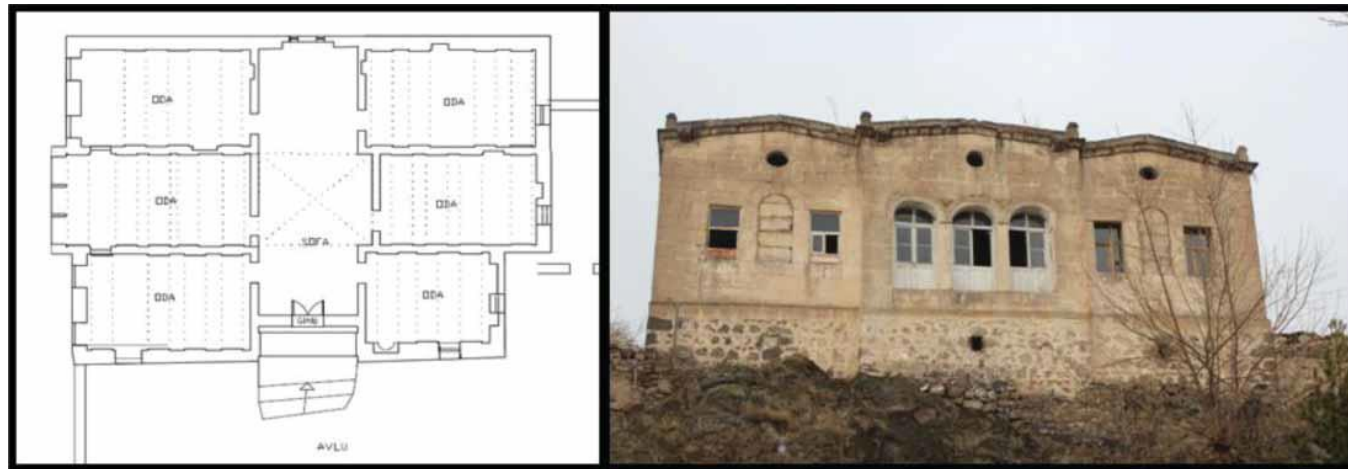


Figure 15. Recent period housing with an inner anteroom (Sahin 2014).

3. Plan types of traditional Guzelyurt (Gelveri)houses

3.2. Aboveground housing structures

3.2.4. *Recent period housing structures (advanced structures from the nineteenth century and structures from the first quarter of the twentieth century)*

3.2.4.3. The type with an inner anteroom, showing horizontal development.

In these recent period housing units, the plan type is different from those already mentioned. It consists of rooms situated around an inner anteroom space (Figure 16).

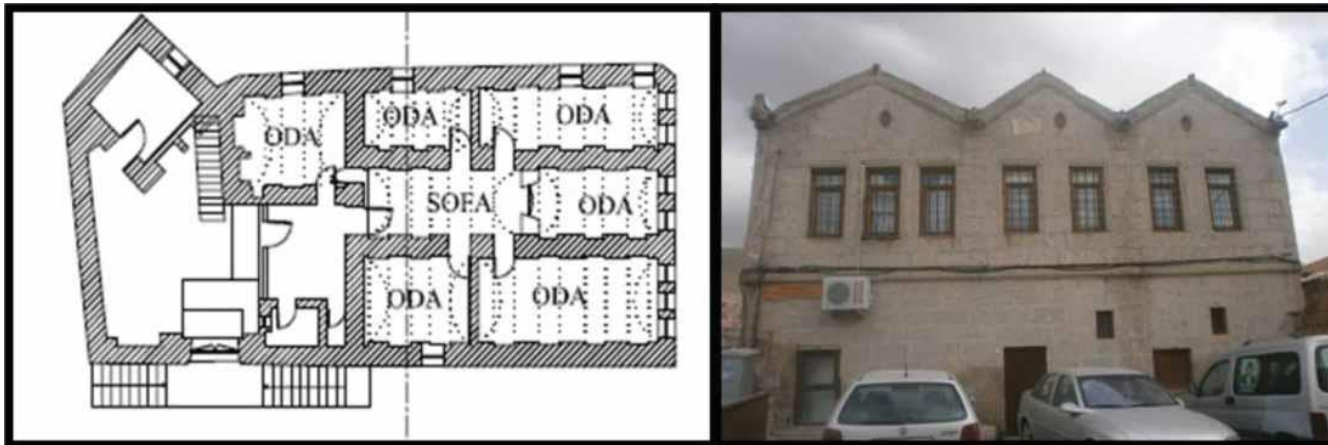


Figure 16. Recent period housing unit with an inner anteroom, showing horizontal development (Sahin 2014).

Conclusion and Suggestion

- In the light of historical data and social structure of the traditional Gelveri housing unit, it was concluded that it would be appropriate to refer to these housing structures, except for early rock-carved examples, as **“Houses of the Karamanlides”**.
- Social transformation, which began with the forced migration of the Karamanlides from the region during the population exchange of 1924, also led to an urban physical transformation over time. Gelveri traditional urban fabric and the housing units were significantly affected by this transformation.

- In this study, original plan types and architectural features of traditional Gelveri housing units were defined. This definition will allow recognition and identification in an original way of traditional housing units and serve as a resource for conservation work carried out in Guzelyurt and the region of Cappadocia.

***THANK YOU
FOR LISTENING***